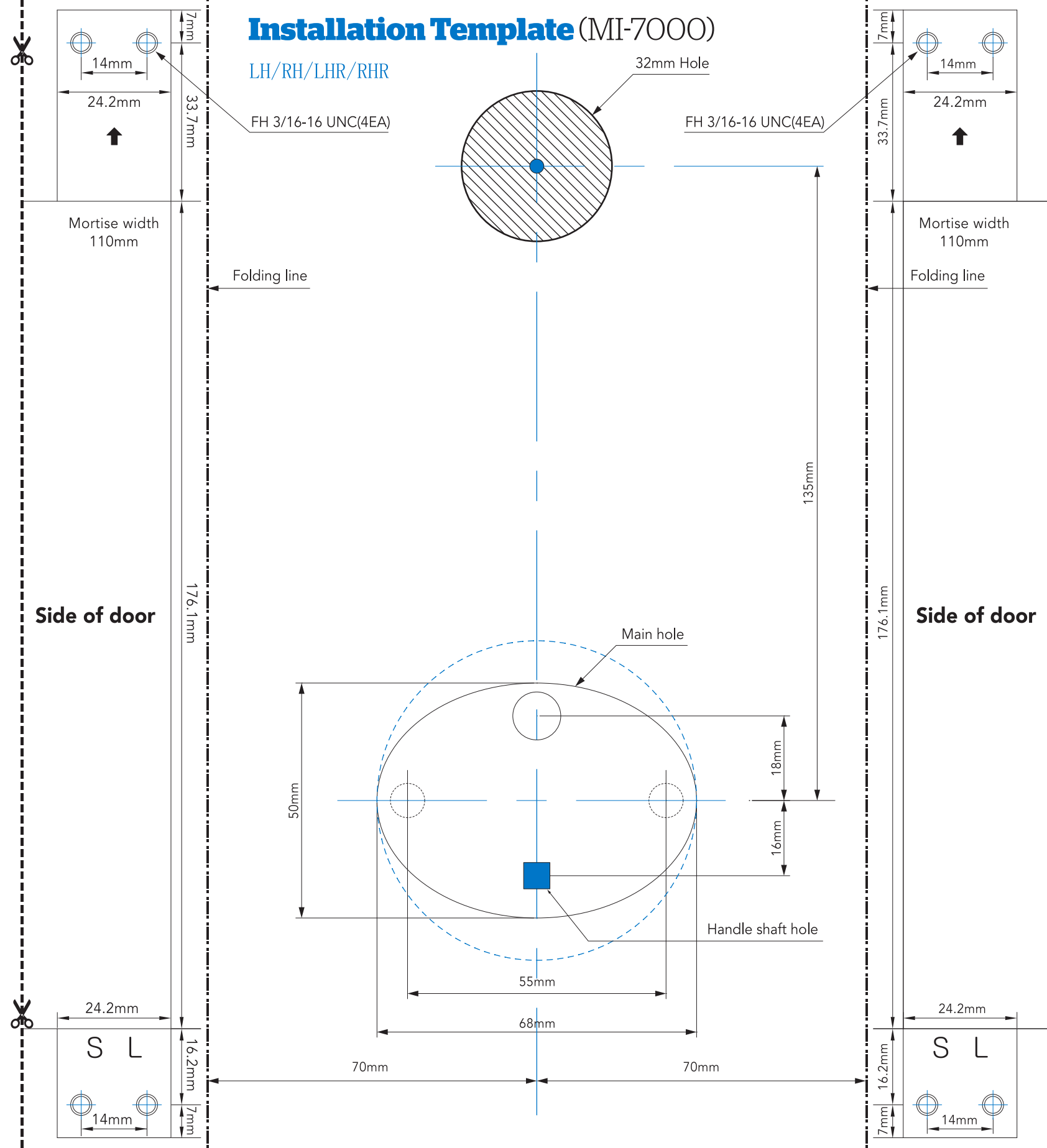
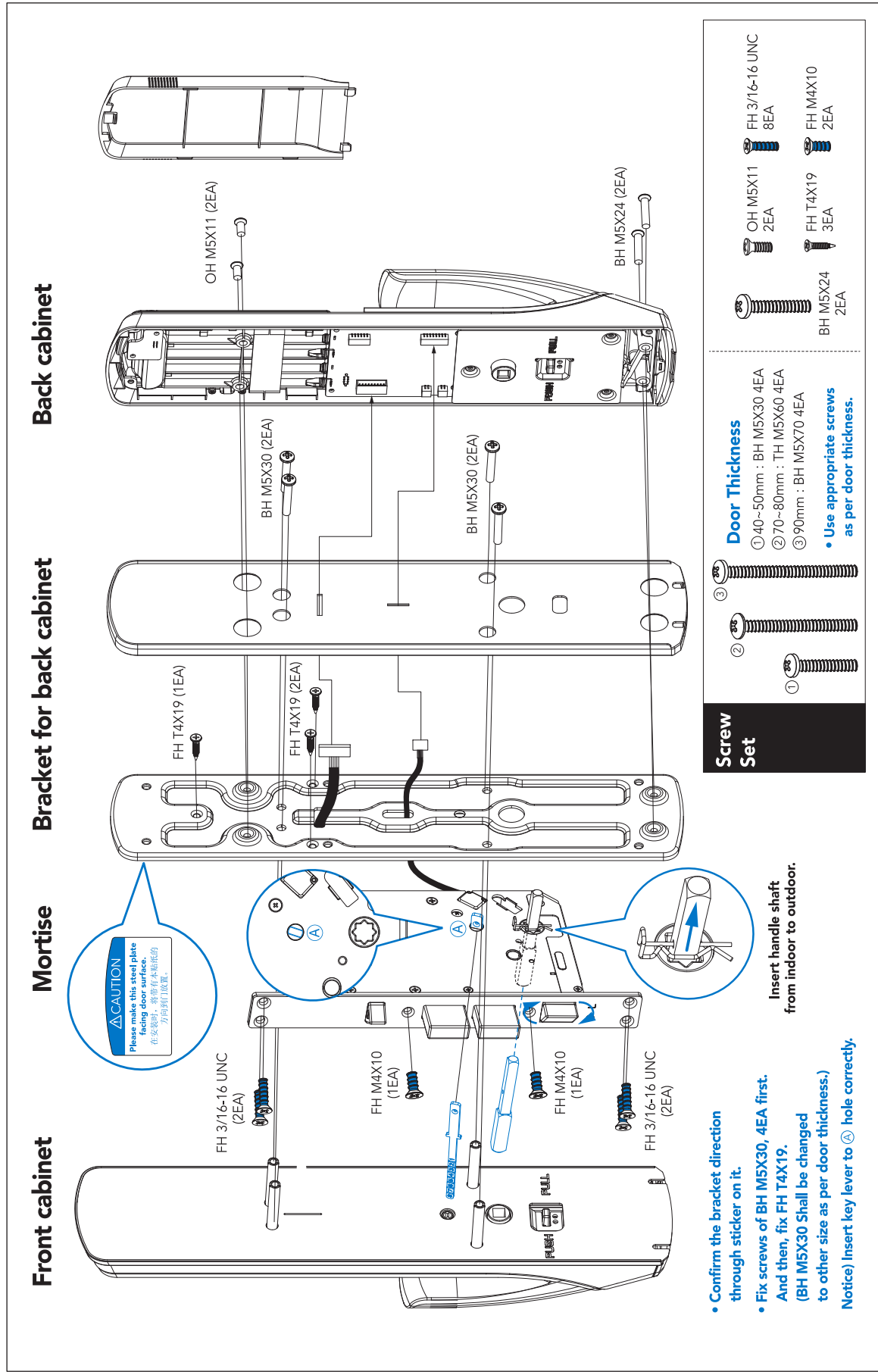


Installation Exploded View (MI-7000)

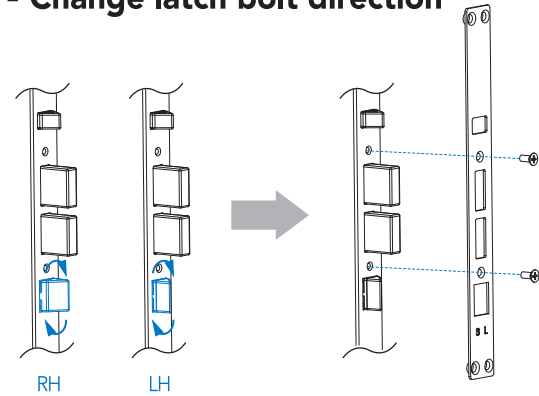


How to install -1 (Mortise Lock)

⚠ Notice

- Installation method for left handed door and right handed door is same.
- Before installation, adjust the direction of latch bolt and striker as per door opening direction.

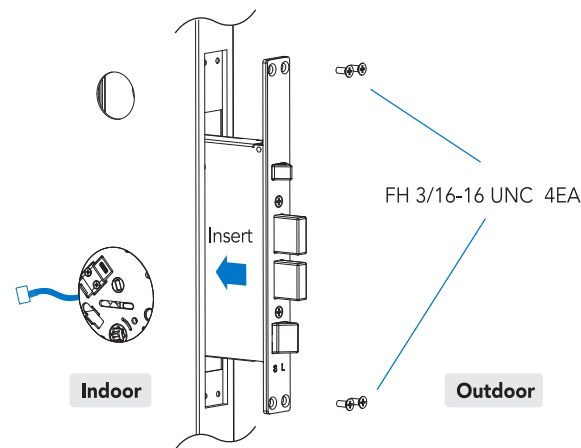
▪ Change latch bolt direction



1. Rotate latch bolt
2. Confirm the direction of latch bolt and fix the plate using FH M4X10, 2EA.

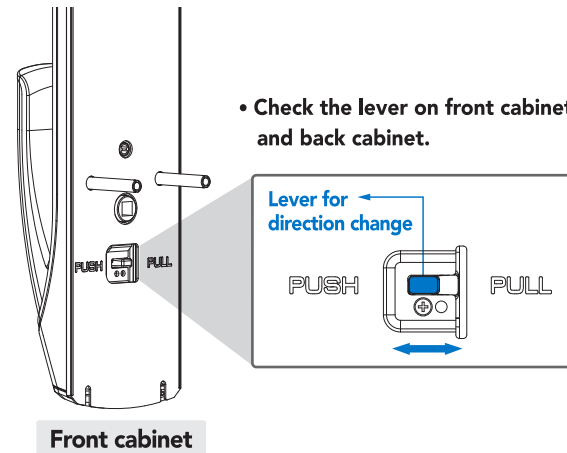
▪ Install mortise

1. Insert mortise to side of door and pull out cable to indoor.
2. Fix the plate using FH 3/16-16 UNC, 4EA.



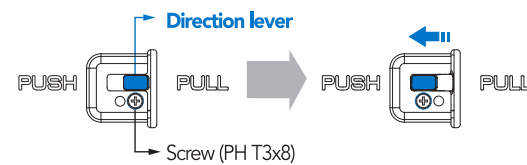
• Place 'SL' logo on mortise to lower side

▪ Change Push-Pull direction



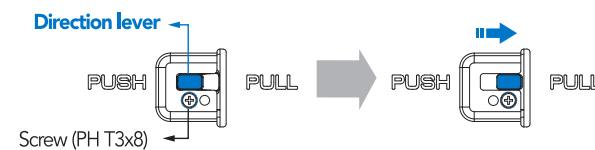
1. Pull → Push direction change (Front cabinet)

- ① Release screw (PH T3X8)
- ② Move the lever towards required direction.
- ③ Fix the screw to hole below the lever.



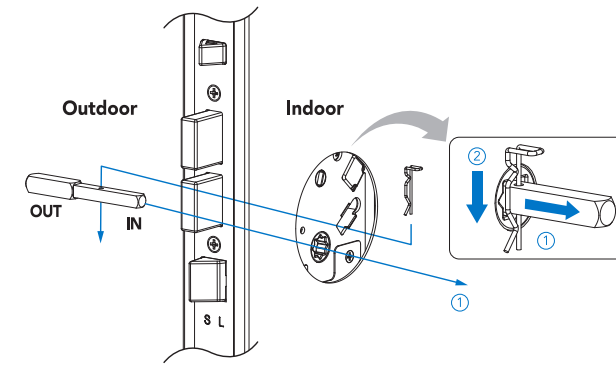
2. Pull → Push direction change (Back cabinet)

- ① Release screw (PH T3X8)
- ② Move the lever towards required direction.
- ③ Fix the screw to hole below the lever.



How to install -2 (Product)

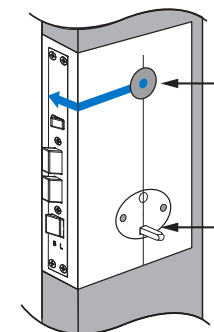
1. Insert handle shaft from outdoor to indoor and fix stop ring to the hole on indoor side of handle shaft.



2. Insert handle shaft to rectangular "Handle shaft hole" of installation template and stick the template to indoor side. Fold the template along to folding line.

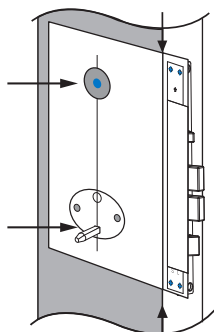
3. Fix the exact position of template and mark the drilling position for hole making. Change direction of template and mark the drilling position on opposite side in same way.

Make indoor hole



Folding by 90 degree and stick to door surface

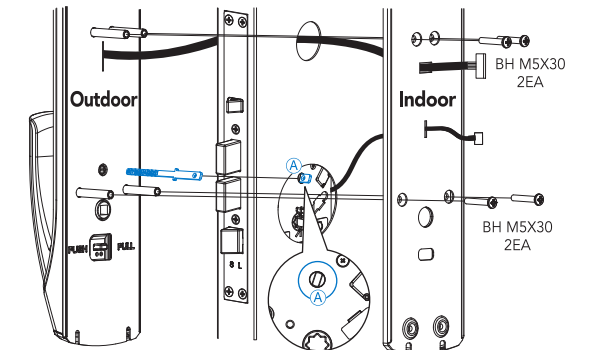
Make outdoor hole



Make sure that folding line is vertical

4. Make hole as per specification. (Ø32)
5. Select Push/Pull direction of front cabinet & Back cabinet before installation. (Refer to instruction of "Change Push/Pull direction")
6. Put the cable of Front cabinet through hole (Ø32) to indoor. Pull out this cable through hole "—" on upper side of Bracket for back cabinet & rubber pad. And pull out the mortise lock cable through the hole "I" on below side of Bracket for back cabinet.

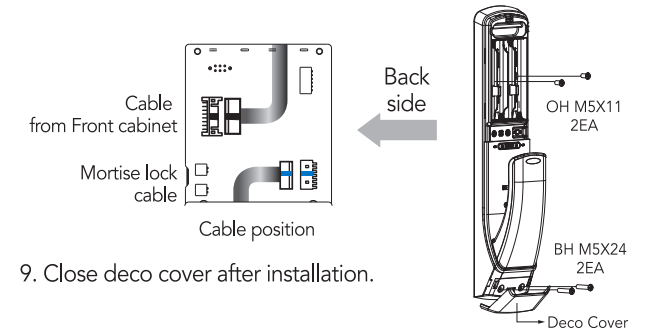
7. As per door thickness, cut the key tail plate refer to the below table. Confirm the cable is not jammed and fix the front & back cabinet by screws. (BH M5X30, 4EA)



Door Thickness	Key tail plate	Door Thickness	Key tail plate
40 mm	1	90 mm	6
50 mm	2	100 mm	7
60 mm	3	110 mm	8
70 mm	4	120 mm	9
80 mm	5		

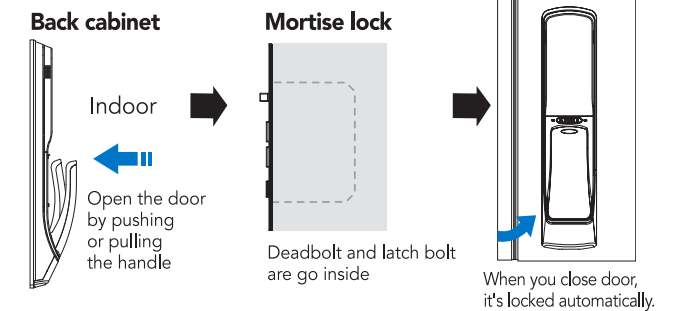
Notice) Insert key shaft to hole ④ correctly.

8. Connect two cables to Back cabinet exactly. Open the deco cover of Back cabinet and fix using screws. (Upper side OH M5X11, 2EA / Lower side BH M5X24, 2EA)



9. Close deco cover after installation.

✓ Check operation of product



✓ Checking point after installation

- ✓ Insert batteries correctly and do open/close test at indoor
- ✓ Register secret code as per user manual
- Factory setting : Normal mode, Secret code "123456"